



FLORIDA HOMES GROUP
INTERNATIONAL REAL ESTATE



ROSELAND



4-6 Beds



3.5-6 Baths



4272

\$1,014,990

ABOUT THIS HOME

The Roseland model by Pulte Homes at Winter Grove in Winter Garden, FL, offers a spacious and flexible 2-story design perfect for modern families. Starting at 4,727 square feet, this home features 4 to 6 bedrooms and 3.5 to 6 bathrooms, providing ample space for growth and comfort. The open-concept layout includes a gourmet kitchen with a large island, flowing into the inviting family room. The main floor also boasts a private owner's suite, while the second floor offers additional bedrooms and a versatile loft. A 3-car garage and covered lanai add convenience and outdoor living space. With easy access to local shopping, dining, and major highways, the Roseland model combines luxury, functionality, and a prime location in the desirable Winter Grove community.

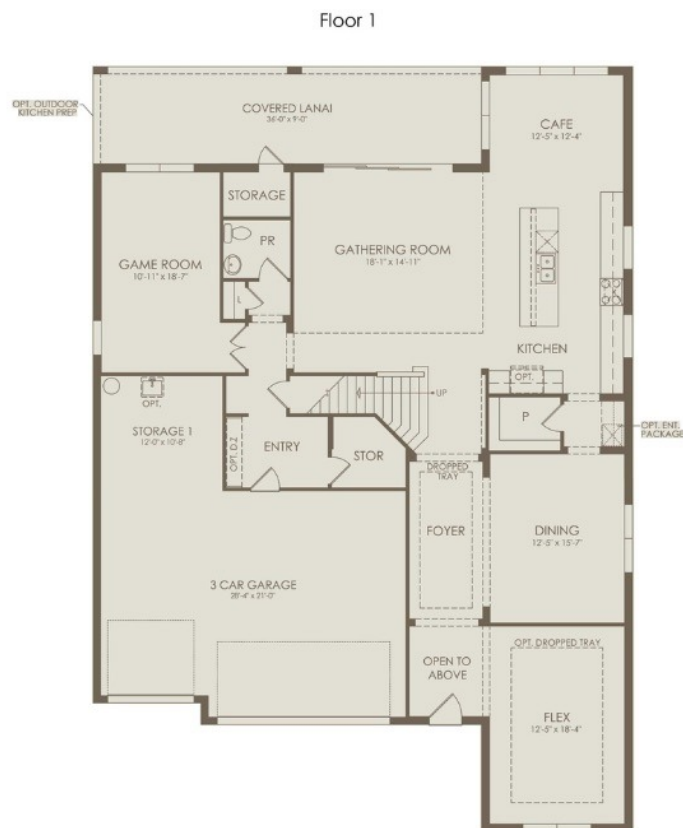
INFORMATION

- Price: \$1,014,990
- Bedrooms: 4-6
- Full Baths: 3.5-6
- Square Footage: 4272
- Year Built: 2025
- Garage: 3 Car

PROPERTY LOCATION

Community: Winter Grove

FLOORPLAN 1



FLOORPLAN 2



FLORIDA HOMES GROUP
INTERNATIONAL REAL ESTATE



ELEVATION IMAGES





PROPERTY IMAGES



